

JCP
UNIVERSE

LIVING IN **ANOTHER NATURE**



JCP UNIVERSE PRESENTS OBJECTS OF WONDER AND DISCOVERY FROM AN IMAGINED ALTERNATE REALITY. CONCEIVED BY ARCHITECT LIVIO BALLABIO OF JUMBO GROUP AND ORCHESTRATED BY CTRLZAK STUDIO, IT'S AN UNCONVENTIONAL BRAND GOING BEYOND THE NORMAL COMMERCIAL FRAMEWORK TO OPEN CULTURE TO EVERYONE. IT GOES BEYOND MARKET TRENDS, BYPASSING SIMPLE VARIATIONS OF FAMILIAR STYLES WITH PIECES OF UNIQUE IDENTITIES.

AS HUMANS FINALLY ACCEPT HOW DEEPLY THEIR ACTIONS IMPACT THE PLANET THEY INHABIT, JCP UNIVERSE BRINGS ATTENTION TO THE SUBJECT BY FOCUSING ON SUBSTANCE. THE ARCHETYPAL FORMS OF THE PIECES AND THE CAREFUL SELECTION OF THEIR COMPONENTS REFLECT THE EONS OF COSMIC TRANSFORMATION THAT GAVE LIFE TO EVERYTHING WE PERCEIVE.

OUR NATURAL ENVIRONMENT IS WHERE ALL OF OUR THOUGHTS, ACTIONS AND LIVES STEM FROM. EVERYTHING WE IMAGINE, EVERYTHING WE CREATE IS ULTIMATELY BASED ON WHAT NATURE OFFERS US. CONSEQUENTLY, ANY KIND OF CREATION IS LARGELY FOUNDED ON WHAT WE PERCEIVE AROUND US. BUT WHAT IF THIS NATURAL WORLD WERE DIFFERENT FROM THE ONE WE ARE USED TO?

ANOTHER NATURE PRESENTS JCP'S UNIQUE ECOLOGY, THROUGH ITS' ARTIFACTS THAT GO BEYOND MERE FUNCTIONAL OBJECTS, BECOMING INSTEAD SYMBOLIC PIECES OF AN ALTERNATIVE REALITY. A REALITY THAT HOPEFULLY WILL MAKE US PONDER UPON OUR OWN WAY OF LIFE IN THIS PRECISE MOMENT OF SPACE-TIME, HERE ON PLANET EARTH.



*"These old travellers'
Dream-tracks made
mountains and caves
Artificial moon"*

Haiku by
Alistair Gentry

KARST BOOKCASE

Design: CTRLZAK + Debonademeo

Eons of sedimentary layering give life to metamorphic designs. An eternal cycle of transformation that composes the very essence of which planets are made. The lava stone fragments are resting on thin metal plates, like suspended imponderable matter in search of its cosmic balance.



DIMENSIONS
L 320 D 45 H 145 cm

COMPOSITION
Metal structure with embossed dark bronze
finishing and lava stone elements.

"Half remembered frost
Washed from black beach
at low tide
Flying islands rise"

Haiku by
Alistair Gentry

AGMENT CONSOLE

Design: CTRLZAK

A fragment from distant planets segmented in two parts. A separated entity that intersects an archetypal plane conveying a cosmic sense of belonging through transformation. A single piece of mineral cut in half and balanced on a horizontal iron plane, expressed in two diverse dimensions: one to be placed on the ground and another on an elevated surface. Functional sculptures, unique in their essence simulating otherworldly landscapes.



DIMENSIONS
L 120 D 30 H 112 cm

COMPOSITION

Metal structure in bronze finishing with manganese salt treatment. Stone elements to choose from Obsidian, Lapis Lazuli, raw Labradorite and raw Amethyst.



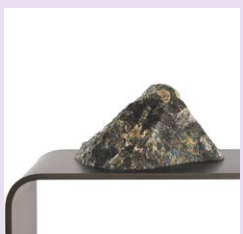
OBSIDIAN

Is believed to have 'metaphysical' qualities that bring clarity to the mind by clearing confusion and expanding your consciousness, helping you enter the realm of the unknown with confidence and ease.



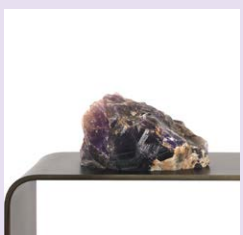
LAPIS LAZULI

Was used in ancient times as a medium to achieve a higher state of being, harmonising the physical, emotional, mental and spiritual levels. It is believed to be a stone of visionary awareness, bringing new information to the mind in images rather than words.



RAW LABRADORITE

Is considered in the 'metaphysical world' as one of the most powerful protectors, aiding the body and spirit in healing itself, able to connect us with parallel worlds of endless possibilities and magic.



RAW AMETHYST

Is considered in spiritual beliefs as the most powerful healing stone of the mineral kingdom. Excellent for harmonizing and stabilizing one's environment, it is said to amplify healing energy improving mental and physical vigour, increase thus inspiration and creativity.

"Half remembered frost
Washed from black beach
at low tide
Flying islands rise"

Haiku by
Alistair Gentry

AGMENT CENTERPIECE

Design: CTRLZAK

A fragment from distant planets segmented in two parts. A separated entity that intersects an archetypal plane conveying a cosmic sense of belonging through transformation. A single piece of mineral cut in half and balanced on a horizontal iron plane, expressed in two diverse dimensions: one to be placed on the ground and another on an elevated surface. Functional sculptures, unique in their essence simulating otherworldly landscapes.



DIMENSIONS
L 50 D 15 H 22 cm

COMPOSITION

Metal structure in bronze finishing with manganese salt treatment. Stone elements to choose from Obsidian, Lapis Lazuli, raw Labradorite and raw Amethyst.



OBSIDIAN

Is believed to have 'metaphysical' qualities that bring clarity to the mind by clearing confusion and expanding your consciousness, helping you enter the realm of the unknown with confidence and ease.



LAPIS LAZULI

Was used in ancient times as a medium to achieve a higher state of being, harmonising the physical, emotional, mental and spiritual levels. It is believed to be a stone of visionary awareness, bringing new information to the mind in images rather than words.



RAW LABRADORITE

Is considered in the 'metaphysical world' as one of the most powerful protectors, aiding the body and spirit in healing itself, able to connect us with parallel worlds of endless possibilities and magic.



RAW AMETHYST

Is considered in spiritual beliefs as the most powerful healing stone of the mineral kingdom. Excellent for harmonizing and stabilizing one's environment, it is said to amplify healing energy improving mental and physical vigour, increase thus inspiration and creativity.

“Oldest house of leaves
Moons rise over harvesting
Mantis watches you”

Haiku by
Alistair Gentry

SELEN VASE

Design: CTRLZAK

A fragment from distant planets segmented in two parts. A separated entity that intersects an archetypal plane conveying a cosmic sense of belonging through transformation. A single piece of mineral cut in half and balanced on a horizontal iron plane, expressed in two diverse dimensions: one to be placed on the ground and another on an elevated surface. Functional sculptures, unique in their essence simulating otherworldly landscapes.



DIMENSIONS
L 27 D 16 H 35 cm (ca.)

COMPOSITION
Selenite block with tube in polished stainless steel.



SELENITE
In ‘metaphysical’ beliefs is considered a high-energy crystal that wards the mind. It is commonly used by crystal practitioners as a way to cleanse the body and mind of negativity and self-limitation, connecting people to their highest level of consciousness where they are most open and accepting of symbolic messaging.

“Compact frozen earth
Pluck a withered,
perfect branch
Old calendar,
forecasts past”

Haiku by
Alistair Gentry

ESKER VASE

Design: POL

Esker is a limited-edition reproduction of a sculpture by Pol Polloniato, realized exclusively for JCP Universe. These biscuit porcelain vases are the synthesis of the recent researches that the Venetian artist carried out on the linguistic and visual codes of the historical, artistic and artisanal heritage of his land. The manufacturing technique is the true protagonist of these pieces: the vases are built with the rubble of ceramic factories. The layers of ceramic rubble create an iconic, full, and timeless shape. The fusion of different forms acquires the primordial purpose for which mankind produces ceramics: to contain.



DIMENSIONS
Ø 33 H 60 cm
Ø 20 H 30 cm

COMPOSITION
Porcelain.



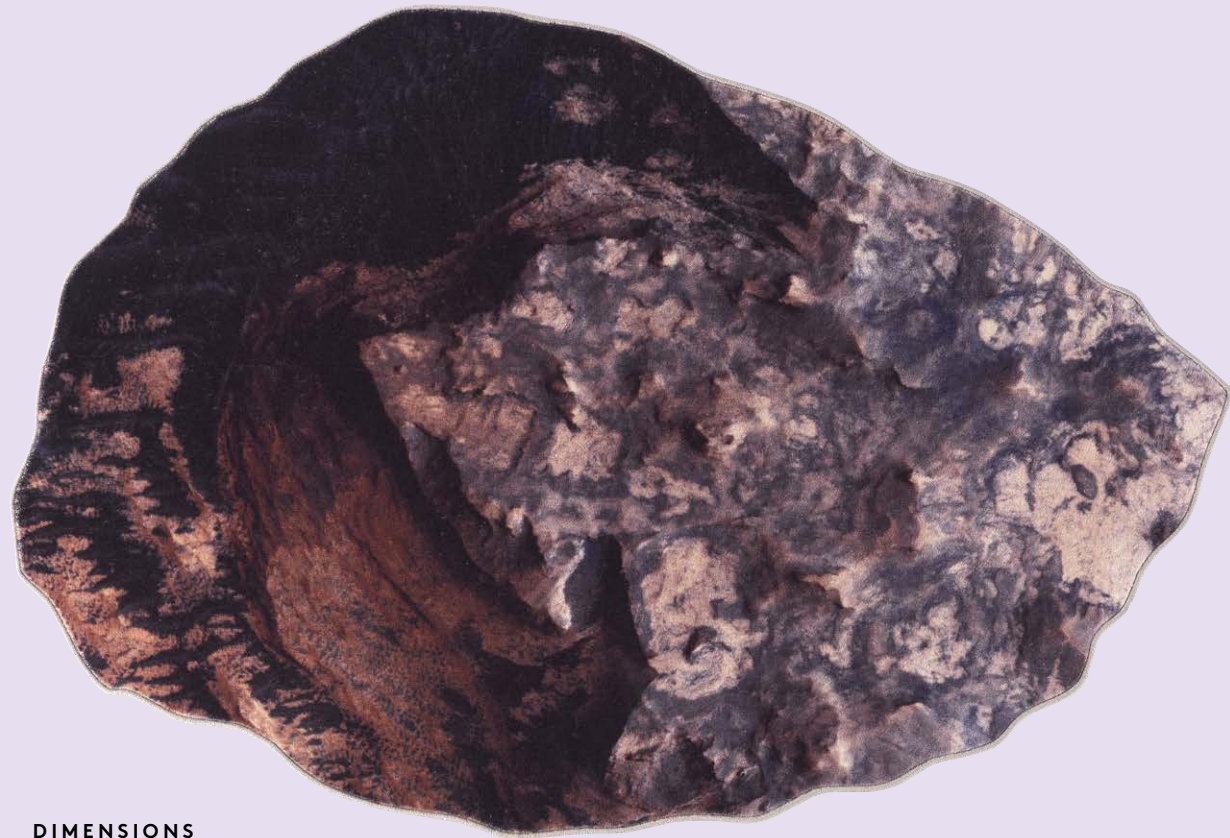
ERUTUF RUG

Design: Studio Lievito

Irregular surfaces transformed by the magma of alien volcanoes invite us to discover unknown planets, scattered with imaginary craters and promontories. Material effects and irregular cuts for a series of tufted rugs that recreates the conformation of alien soils.

*"Under this soft place
Crystal bones of dinosaurs
From unseen futures"*

Haiku by
Alistair Gentry



DIMENSIONS

L 380 D 266 cm

L 200 D 140 cm

COMPOSITION

Digital print on polyamide base with
thread hem and geotextile back.

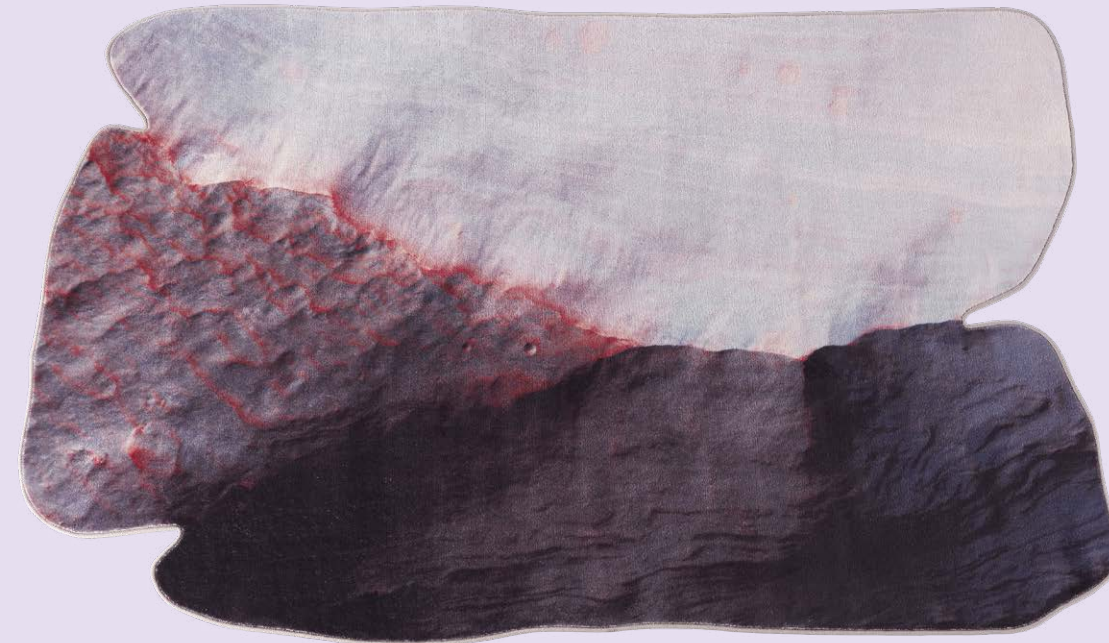
TUFURE RUG

Design: Studio Lievito

Irregular surfaces transformed by the magma of alien volcanoes invite us to discover unknown planets, scattered with imaginary craters and promontories. Material effects and irregular cuts for a series of tufted rugs that recreates the conformation of alien soils.

*"Under this soft place
Crystal bones of dinosaurs
From unseen futures"*

Haiku by
Alistair Gentry



DIMENSIONS

L 250 D 160 cm

COMPOSITION

Digital print on polyamide base with
thread hem and geotextile back.

JCP UNIVERSE
An exclusive collection by Jumbo Group

JCP
UNIVERSE

Via Montesolaro 14b
22063 Cantù (CO)
Italy

+39 031 7075 777

info@jcpuniverse.com
www.jcpuniverse.com